

SIMPLY SOFAS<sup>®</sup>

SO FA, SO GOOD<sup>®</sup>

Inside Milan  
Design Week  
with Marco

# MID WW 2026

THE  
7

HOTTEST  
DAYS IN DESIGN

Trends Shaping  
Tomorrow's Interiors

The Season's  
Showstoppers

New Collections from  
Europe's Leading Brands

# The World Looked to Milan

For over 25 years, Simply Sofas has travelled to Milan to stay close to the ideas shaping the future of interiors. Not just to see what's new, but to understand what truly matters.

This year, I took that journey through Milan Design Week 2026. Across showrooms, installations, and headline launches, one thing became clear: design is becoming more personal, more adaptive, and more connected to the way we live now.

This journal is a curated look at the collections, trends, and moments that stood out most during the week.

So here it is.  
Milan, through my eyes.

*Marco*



With Vincent Van Duysen at Milan Design Week 2026. Celebrating design, dialogue and shared inspiration with esteemed architects.

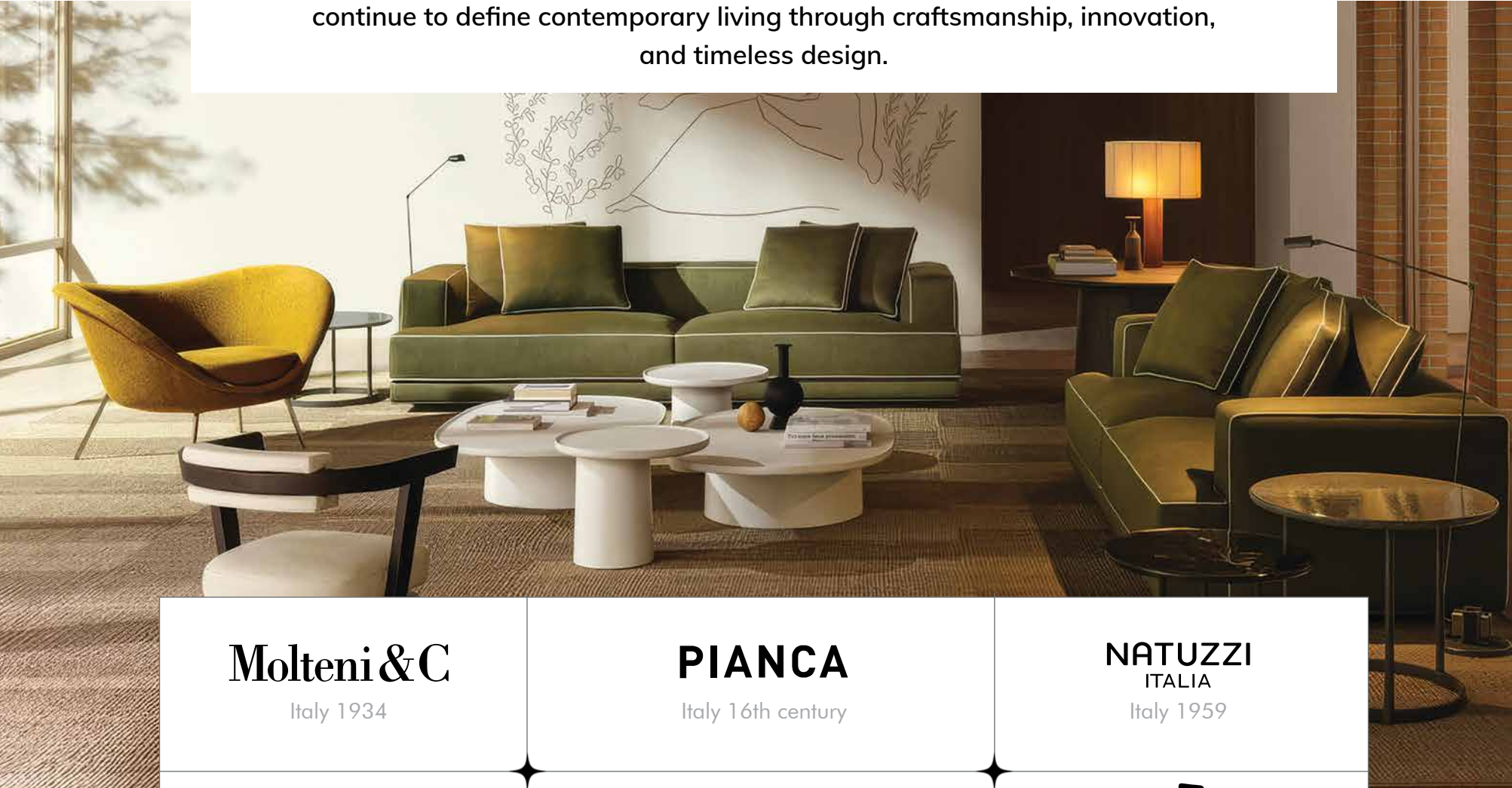
## Contents

- Living \_\_\_\_\_ 04-11
- Dining + Bar \_\_\_\_\_ 12-15
- Bedroom \_\_\_\_\_ 16-19
- Kitchen \_\_\_\_\_ 20-23
- Outdoor \_\_\_\_\_ 24-27
- Cabinets & Accents \_\_\_\_\_ 28-33
- Trending Colours \_\_\_\_\_ 34-37

- Patterns & Prints \_\_\_\_\_ 38
- Material Highlights \_\_\_\_\_ 39
- Aurea \_\_\_\_\_ 40-41
- Fuorisalone \_\_\_\_\_ 42-43
- Superdesign \_\_\_\_\_ 44-45
- SaloneSatellite \_\_\_\_\_ 46-47

## The Company We Keep

Simply Sofas is home to some of the world's most respected design brands that continue to define contemporary living through craftsmanship, innovation, and timeless design.



<b>Molteni &amp; C</b> Italy 1934	<b>PIANCA</b> Italy 16th century	<b>NATUZZI</b> ITALIA Italy 1959
<b>BONALDO</b> Italy 1936	<b>NICOLETTIHOME</b> ® Italy 1967	<b>CALIA</b> ITALIA Italy 1965
<b>cattelan</b> italia Italy 1979	<b>calligaris</b> Italy 1923	<b>ESTRO</b> MILANO HANDMADE IN ITALY Italy 1956
<b>schüller.</b> Germany 1966	<b>reflex</b> Italy 1940	<b>fama</b> Spain 1970
 THE INNOVATORS OF COMFORT™ Norway 1934	<b>Becker</b> 2010	<b>IMG</b> ® COMFORT Norway 2006
<b>ezpeleta</b> <sup>e</sup> Portugal 1935		

Most products can be ordered through our stores, with select pieces already on display.

To know more, log onto [simplysofas.in](http://simplysofas.in)



*Julian Modular Seating System with multi-density cushioning and integrated lumbar support – Vincent Van Duysen, Molteni&C*



*Gibson Sofa with Cubist-inspired modular elements and variable-depth configurations – Cattelan Italia*

*Britney Turn Swivel Armchair with textured bouclé upholstery and a rotating base – Cattelan Italia*



*Extra-large lounge armchair in textured bouclé fabric – W.Schillig*

# Living



## Oversized Modularity Dominated the Floor

Milan Design Week 2026 leaned heavily into oversized modular systems, low-slung seating, sculptural curves, and deeper proportions. Upholstery moved towards richer tactility, while lacquered surfaces, integrated side elements, and asymmetrical compositions brought a more architectural presence into living spaces.



*Corsetto Armchair with soft, full-bodied contours and leather detailing – Cristián Mohaded, Molteni&C*



*Dream Leather Modular Sofa by Estro Milano*

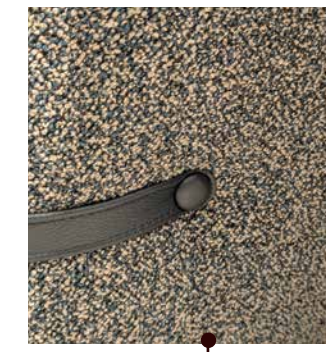


*Bosco Armchair with a metal frame, variable-density padding and wraparound upholstery – Naoto Fukasawa, Molteni&C*

*Curved Modular Sectional with fabric upholstery – NicolettiHome*



*Dwell Modular Sofa – Natuzzi Italia*



*Round Sofa with electric headrests, lumbar support and recline function – Estro Milano*



*Petalo Tilt Modular Sofa with adjustable backrests and expandable seat depth – Calia Italia*

# The CURVES that everyone's talking about

Curved modular sofas emerged as one of the defining expressions of contemporary living. Moving away from rigid layouts, designers embraced fluid, sculptural forms that encourage openness, conversation and adaptability.

*Grant Modular Sofa with a lightweight sled-base structure – Bonaldo*



*Giona Modular Sofa with woven leather-cord tubular detailing, paired with the Laguna Coffee Table in high-gloss lacquer finish – Pianca*

*Stone Modular Sofa with pocket-sprung cushions and fully removable covers – Calia Italia*



*Jordan Sofa with electrically adjustable Zero Gravity recliners – Estro Milano*



*Leonard Leather Armchair with a distinctive double-shell structure – Christophe Delcourt, Molteni&C*



*Amour Armchair with an enveloping backrest and architectural swivel pedestal – Fabrice Berrux, Bonaldo*



*Matheola Modular Sofa with a sliding backrest mechanism and expandable seat depth – Calia Italia*



Indiana Modular Sofa with recline function and Web armchair, with polyurethane cushioning – NicolettiHome



Hug Poltrona Swivel Armchair by Reflex



Scialla Modular Sofa with MICROFLOCK® cushioning technology – Calia Italia



Mr. Maaruti Rao with Giuseppe Nicoletti, behind the Ambassador Sofa at Milan Design Week 2026 – NicolettiHome



Caleo Sofa with flowing geometries and a lightweight open-base structure – Natuzzi Italia

Amama Modular Sofa with layered cushioning and highly flexible configurations – Natuzzi Italia



The cushions and support elements can be repositioned or slid, allowing the seating depth and orientation to change depending on how you want to lounge.

Swivel Armchair and Ottoman featuring a white bouclé fabric seat and a metal base by W.Schillig



Leather Sofa with repositionable armrests that double as side tables – W.Schillig

# Dining + Bar



## Stone was Everywhere

Dining spaces this year centred around expressive materiality. Ceramic, brushed marble, range of stones, smoked glass, and monolithic bases dominated tables and consoles, while dining chairs softened through wraparound forms and textured upholstery.

The bar evolved too, moodier, darker, and increasingly integrated into living environments.



*Extensible Riverstone Table featuring hammered glass, paired with the Glenn Chair's ergonomic curved profile – Calligaris*

*Lise Table with a Rainforest Green marble top and intertwining curved base structures – Christophe Delcourt, Molteni&C*



*Atelia Chair with a sculpted upholstered shell and swivel or fixed-base options – GamFratesi, Molteni&C*

*Magellano and Sablier Chandeliers combining sculptural LED forms with suspended crystal elements – Cattelan Italia*



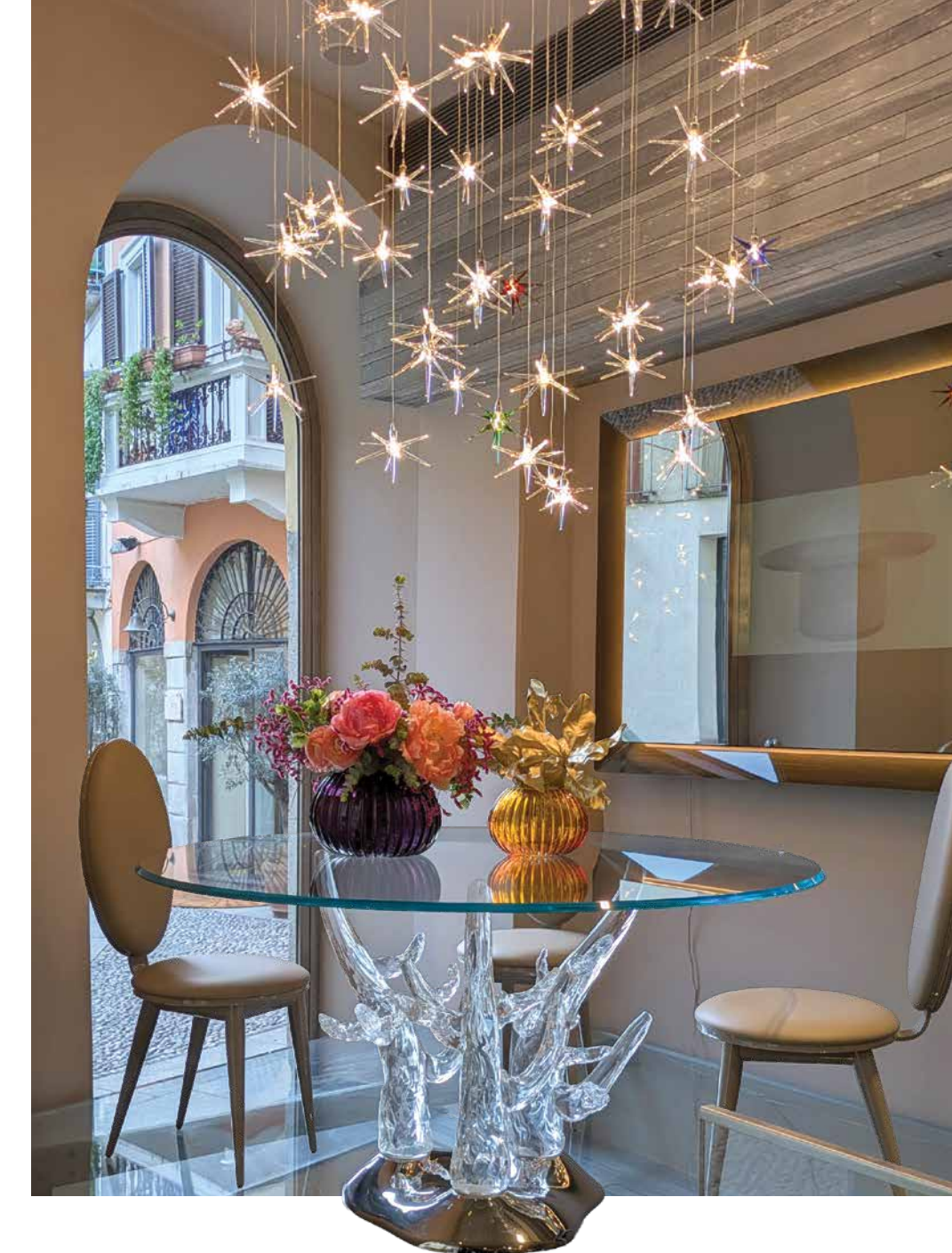
*Magnum Table with a 6-metre ceramic top and chiaroscuro base detailing, paired with the Britney Turn Swivel Armchair – Cattelan Italia*



*Inspired by the traditional Japanese Urushi Technique, the lacquered Sabi Table by Pianca*

*Tea Chair by Pianca*

*Dove Stool with a black chrome metal frame, paired with the Pan Coffee Table – Natuzzi Italia*



*Corallo 72 Dining Table with sculptural Murano glass supports, paired with the Bastide Chair's lacquered timber frame and Stella Lampadario Chandelier's illuminated glass-star composition – Reflex*



*Soffio Up Dining Table with extendable functionality, paired with the Dafne Chair's fully upholstered shell and enveloping curved backrest – Pianca*



*Sipario Wood Extendable Table with an integrated Evolution extension system, paired with the Alma Armchair featuring a sculpted curved shell – Tonin Casa*



*Caleo Sculptural Dining Table & Riva Dining Chairs by Natuzzi Italia*



*Gliss Master-Meridian Wardrobe with floor-to-ceiling glass partitions and Marteen Modular Seating System – Vincent Van Duysen, Molteni&C*



*Gliss Master Wardrobe System with an integrated hat display module and adjustable lighting elements – Vincent Van Duysen, Molteni&C*

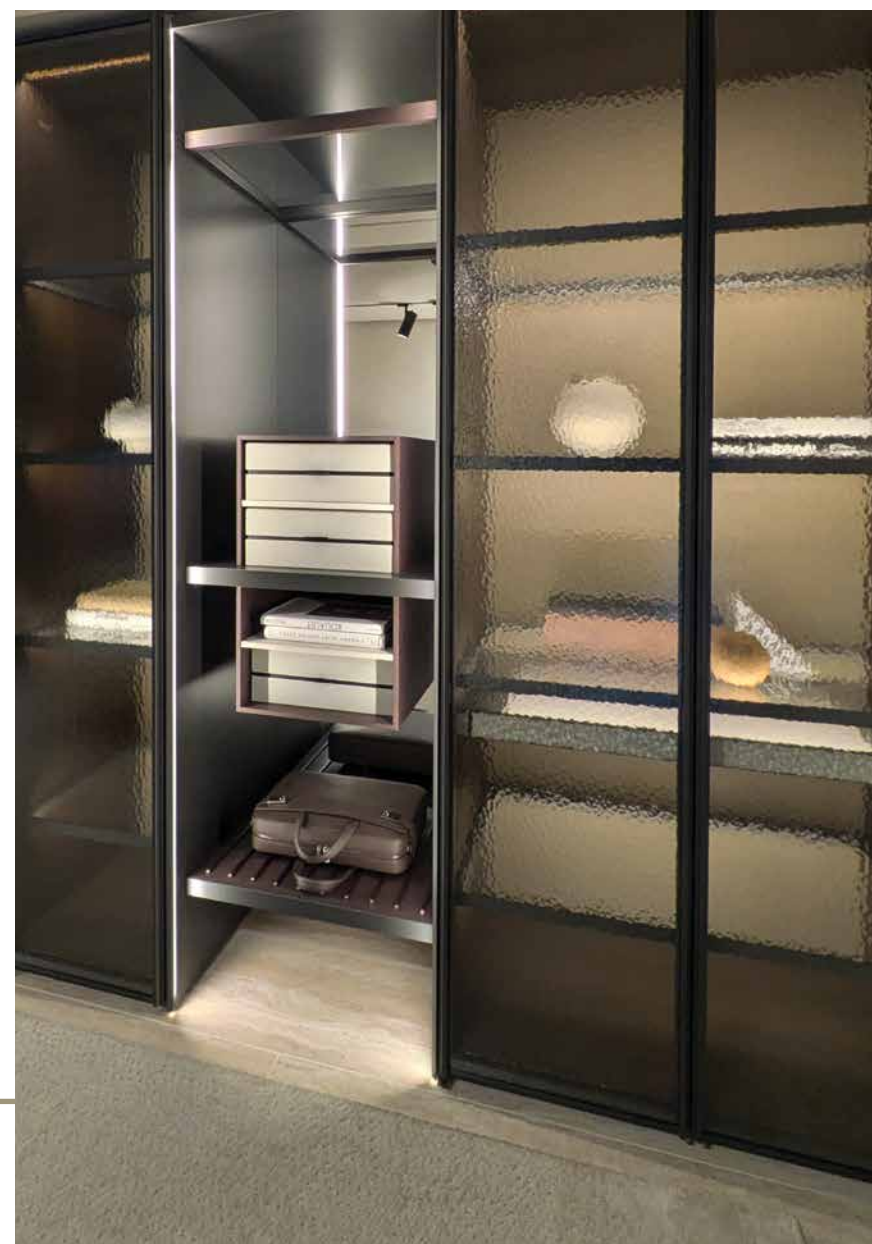


*Palazzo Walk-in Closet – Vincent Van Duysen, Molteni&C*

# Bedroom

## Everything Felt More Integrated

The design language moved towards architectural integration. Wardrobes and shelving systems paired smoked glass, aluminium framing, integrated lighting, and concealed storage with softer geometries, darker timber finishes, and oversized upholstered headboards.



*Gliss Master Wardrobe System with smoked glass doors, integrated lighting and parallel internal partitioning – Vincent Van Duysen, Molteni&C*



*Gliss Master Wardrobe with saddle leather-clad doors, featuring a remote-controlled electronic safe, integrated watch winder with glass display, and privacy drawers – Vincent Van Duysen, Molteni&C*



*Theo Bed with fully upholstered sculptural forms and generous padded volumes – Yabu Pushelberg, Molteni&C*



*Milano Wardrobe featuring Canna di Fucile-framed glass panels and 180° pivot-opening hinges – Pianca*



*Walk-in wardrobe system – Pianca*

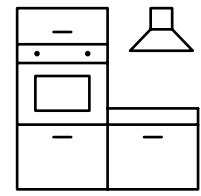
*Cove Bed with wraparound upholstered wings and an integrated platform base – Pianca*



*Tibeau Bed with an iconic T-structure in solid wood and brutalist-inspired proportions – GamFratesi, Molteni&C*



# Kitchen



## Concealed Functionality Led the Language

Milan's latest kitchens focused on concealed functionality, fluted detailing, sculptural islands, and integrated appliances hidden behind architectural surfaces. Timber, brushed metal, and expressive stone finishes replaced colder minimalist palettes.



*Atelier Tall Units with bronze glass and a Rainforest marble backboard – Vincent Van Duysen, Molteni&C*



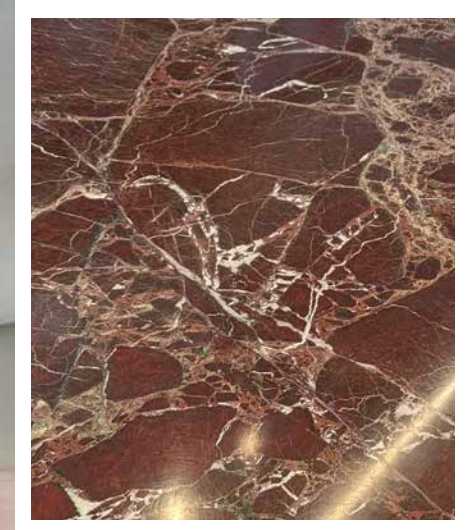
*Ratio Kitchen combining exposed metal structures with vertical wood slat detailing – Vincent Van Duysen, Molteni&C*



*Physis Kitchen in Amber Oak with Rainforest marble countertop and Mollis Swivel Stool – Vincent Van Duysen, Molteni&C*



*Physis Kitchen combining pebble-finish base units, Amber Oak cabinetry and Rainforest Green marble with an integrated sink – Vincent Van Duysen, Molteni&C*



*The beauty of Rosso Levanto*

*VVD Kitchen featuring the striking Rosso Levanto Marble – Molteni&C*

Dissolving the boundaries between kitchen, dining and living. Rather than treating the kitchen as a purely functional zone, Vincent Van Duysen explored it as an extension of the living space, more architectural and deeply connected to conversation, comfort and everyday rituals.





*Chelsea Modular Outdoor Sofa reinterpreting the original indoor design for open-air living – Studio Dordoni, Molteni&C*



*Noon Pad Armchair with padded seat in 100% recycled Cura Loop® fabric - Ezpeleta*



*Foster + Partners' Arc Sculpture Table in mono-material cement, paired with Green Point stool in burnished aluminium – Molteni&C*

# Outdoor



## Performance Materials Became More Refined

Outdoor collections mirrored interior living more closely than ever. Deep seating, woven textures, sculptural profiles, and earthy tonal palettes blurred the line between indoors and out, while performance fabrics became noticeably more refined and tactile.

*Unna Table with fibreglass-reinforced polypropylene legs, paired with the Park Armchair in Olive Green/Eucalipto – Ezpeleta*



*Petalo Armchair and Pouf with a lightweight aluminium base in merlot red - Vincent Van Duysen, Molteni&C*



*Levante Out Modular Sofa with removable covers, breathable drainage padding and stainless steel frame – Pianca*



*Pantalica Sunbed inspired by rustic Mediterranean landscapes and Pantalica UNESCO heritage site – Elisa Ossino, Molteni&C*

*Orizzonte Sunbed with stained Okumé wood frame in Canaletto walnut & an adjustable backrest – Reflex*



*Outdoor dining set with polypropylene Trena Armchairs, Quatro Bistro Table & Platto Parasol – Ezpeleta*



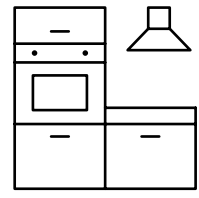
*Levante Out Reclining Lounger by Pianca – Made using weather-resistant polyurethane padding*



*Palinfrasca Outdoor Sofa with iconic teak structure, reinterpreting Luca Meda's 1994 design – Molteni&C*



# Cabinets & Accents



## Gloss Made a Comeback

Mirrors became sculptural objects, lighting grew larger and more expressive, and cabinets embraced glossy lacquers, textured finishes, and coloured glass. Across Milan Design Week 2026, smaller pieces carried a stronger sense of individuality and artistic presence.



*Hula Hoop by Reflex – A coffee table with a cylinder base covered in leather and a circular motion mechanism*



*Ascot Wall Mirror in a Fumé or Bronze Finish – Cattelan Italia*

*Midday Console defined by clean lines, balanced proportions and exposed joinery – GamFratesi, Molteni&C*



*Ludwig Armchair with white upholstered seat and quilted grey leather exterior, paired with Foulard sculpted glass side table featuring a continuous draped form – Reflex*

*Marea Sideboard in sculpted wood with cloudy bronze finish, inspired by ocean waves – Tonin Casa*





Day Semi Circle Mirror by Cattelan Italia



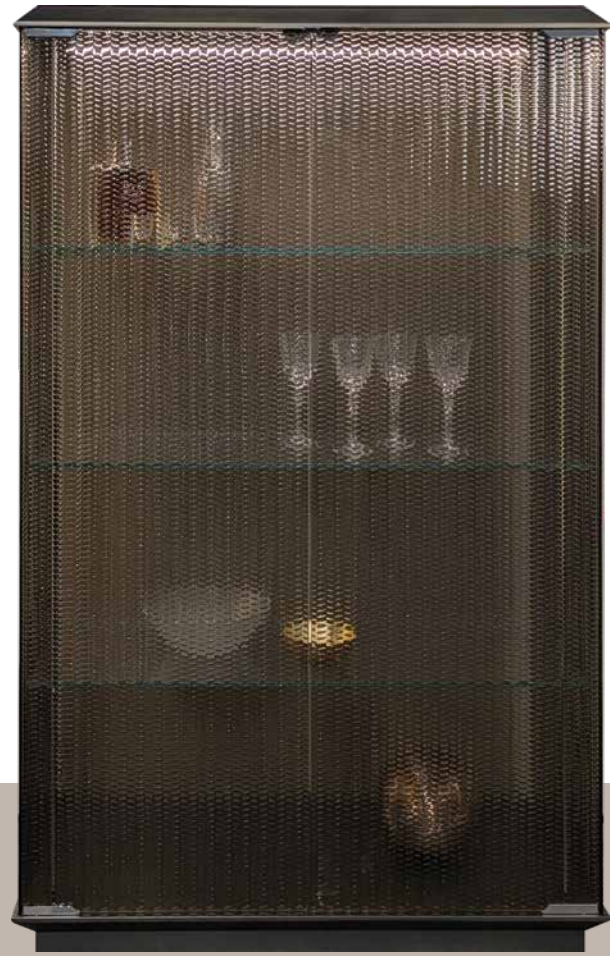
Luma Vanity Desk by Natuzzi Italia

Characterised by a fused glass frame with undulating surfaces – Eos Mirror by Tonin Casa



Lingotto Wood Sideboard with a double-sided curved design in Canaletto walnut veneer – Tonin Casa

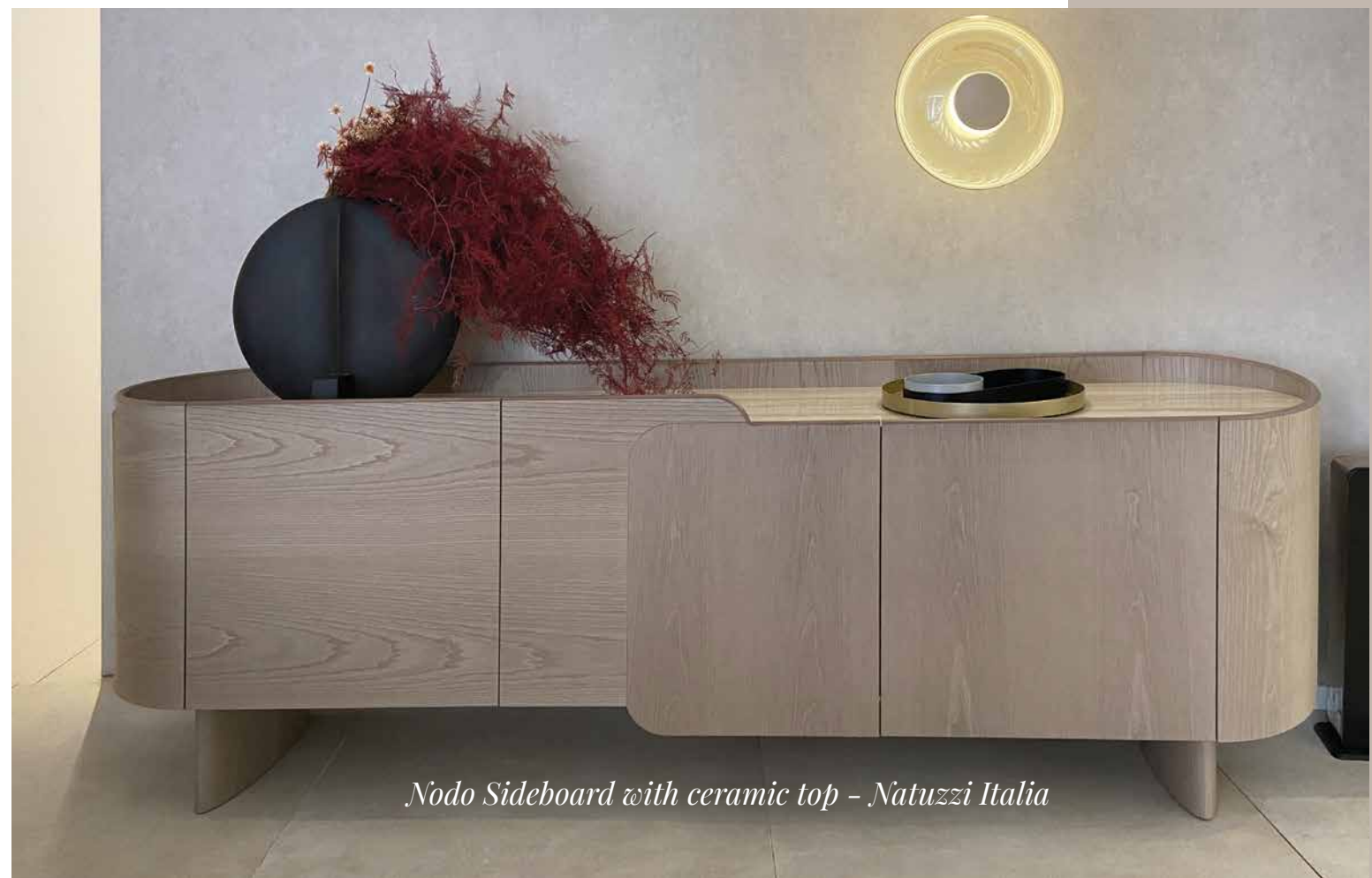
Twill Madia Sideboard with fused bronze or extra-clear Twill glass doors – Reflex



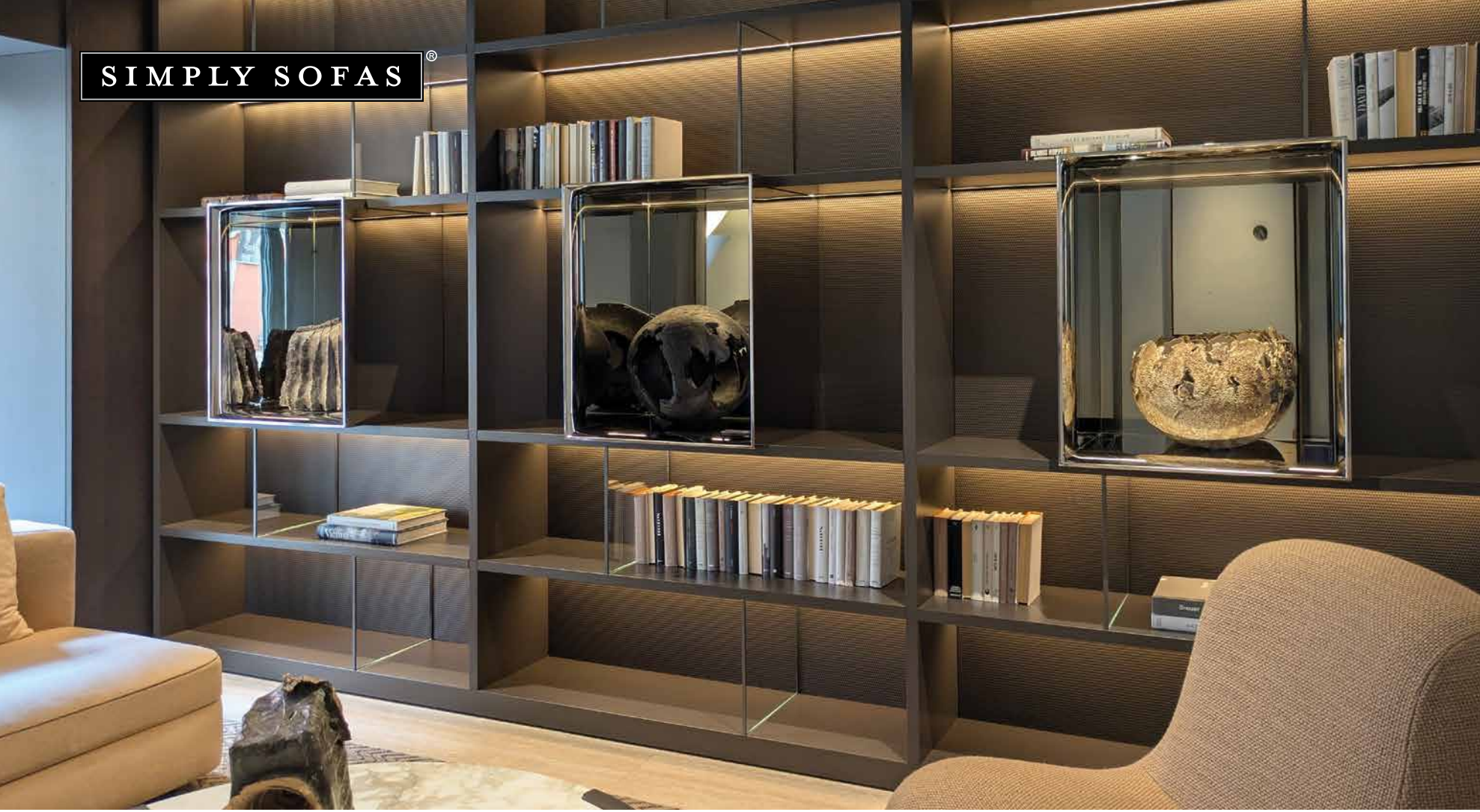
Marco examines Gong – Featuring a textured glass finish – Tonin Casa



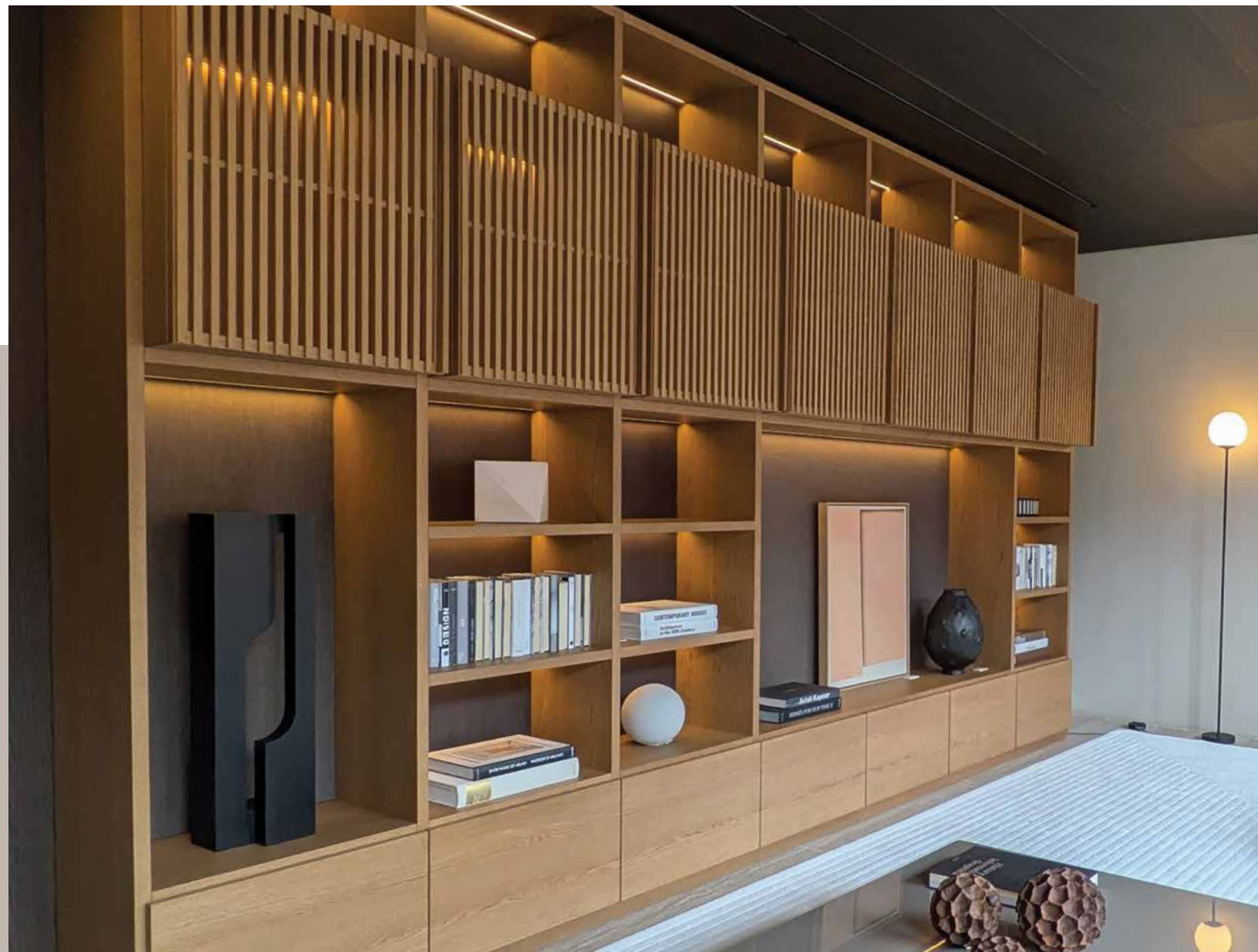
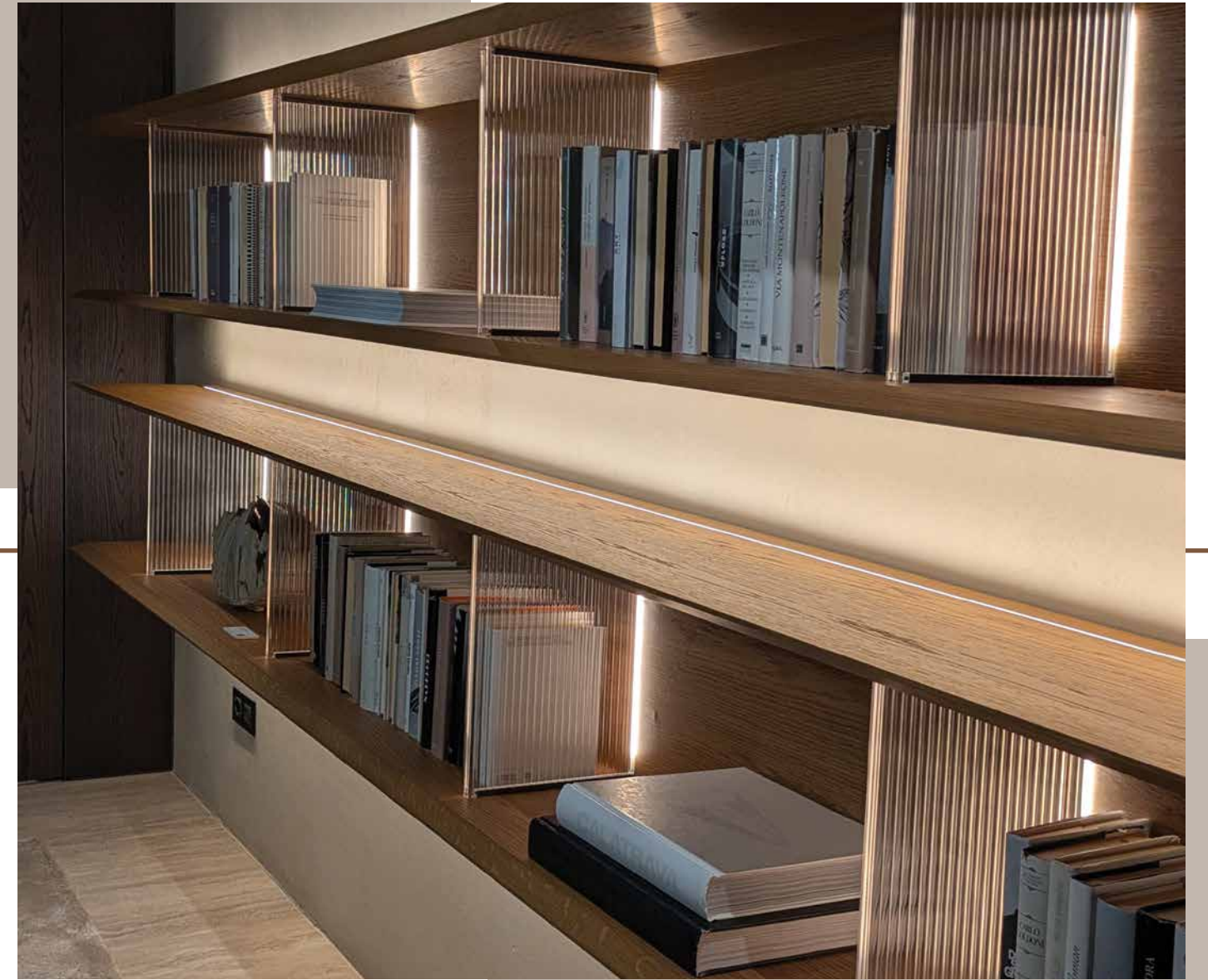
Lake rounded cabinet/bar unit with recessed ceramic top and handleless doors – Calligaris



Nodo Sideboard with ceramic top – Natuzzi Italia



*The 505 UP Harry's Bar Module - Nicola Gallizia, Molteni&C*



*505 UP System with optional Calacatta Vena Vecchia textured ceramic detailing - Molteni&C*



*Radice Wall Unit and Entertainment System - Natuzzi Italia*

# Trending Colours

Well, Colour Had a Lot to Say

Milan's palette this year felt richer, warmer, and far more expressive. Earthy greens, chocolate browns, stone tones, and dusty reds grounded many of the collections, while deeper accents of ochre, plum, cobalt, and burgundy added drama in all the right places.



*Sabi Table by Pianca*



*Phoenix Sofa with rotating seats, adjustable armrests and foldable backrests - Koinor*



*Upholstered in a rich red brick tone*

*Maximilian Expansive Modular Sofa & Olos Swivel Armchairs by Bonaldo*



*Wings Sofa by Estro Milano*

*Boston Desk by Cattelan Italia*



*Koinor Swivel Armchair*



*Ivory leather electric recliner with adjustable headrests - NicolettiHome*



*Divine Mirror and Velo Sideboard - Calligaris*



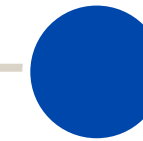
*Double Sphere Floor Lamp by Tonin Casa*



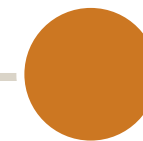
*Mindful Sofa with zero gravity recline and 360° adaptive seating, paired with a lift-top coffee table on wheels - Natuzzi Italia*

# Accent Colours

From bursts of lacquered red and cobalt blue to flashes of butter yellow and emerald green, designers used colour sparingly yet dramatically, adding rhythm, contrast and personality to otherwise calm, sculptural spaces.



*Modular Sofa by Estro Milano*



*Silla Armchair by Calia Italia*



*Dafne Chair by Pianca*



# Patterns & Prints

## The Return of Expressive Interiors

From soft florals to sharp geometrics, patterns played a stronger role across interiors this year. Stripes, motifs, layered textures, and tactile weaves brought movement and personality into spaces without overwhelming them.

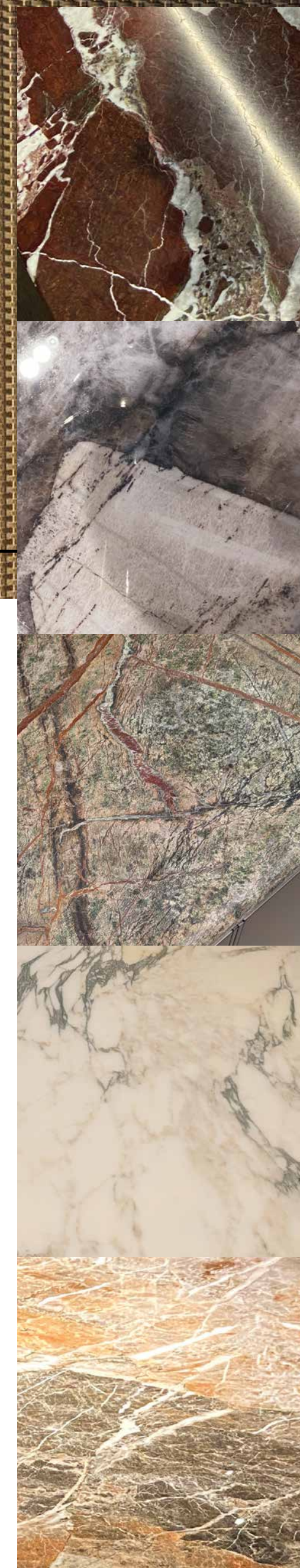


*Tea Chair by Pianca*



*Chelsea Modular Outdoor Sofa by Molteni&C*

*Calligaris and Twinset unveil Glen Soft by Gino Carollo*



# Material Highlights

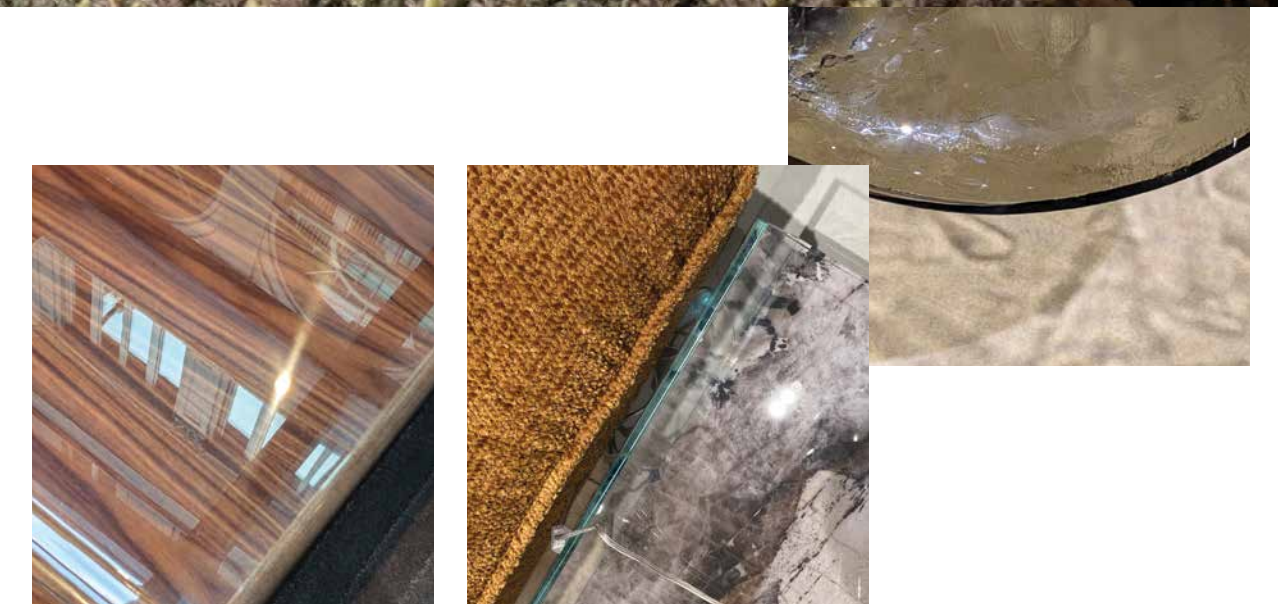
## The Textures Did All the Talking

This year's materials focused less on perfection and more on feeling. Marble, matte finishes, brushed metals, tactile fabrics, raw stone, smoked glass, and textured woods appeared across almost every major collection.



### *Bouclé*

remained strong, but surfaces overall felt softer, deeper, and more layered.



## The Emphasis was Clear

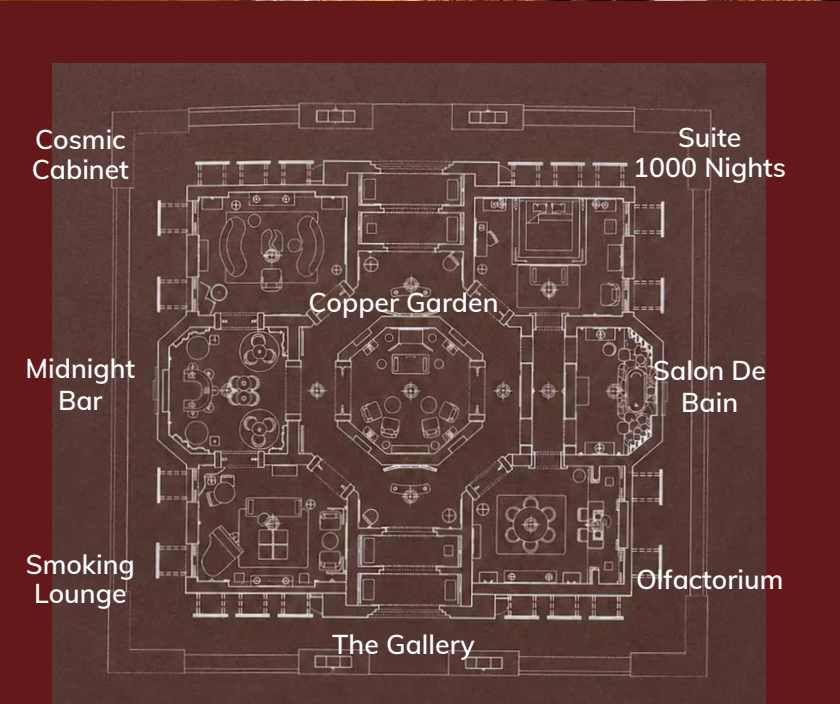
Materials should **age beautifully**, **feel honest**, and **invite interaction**.



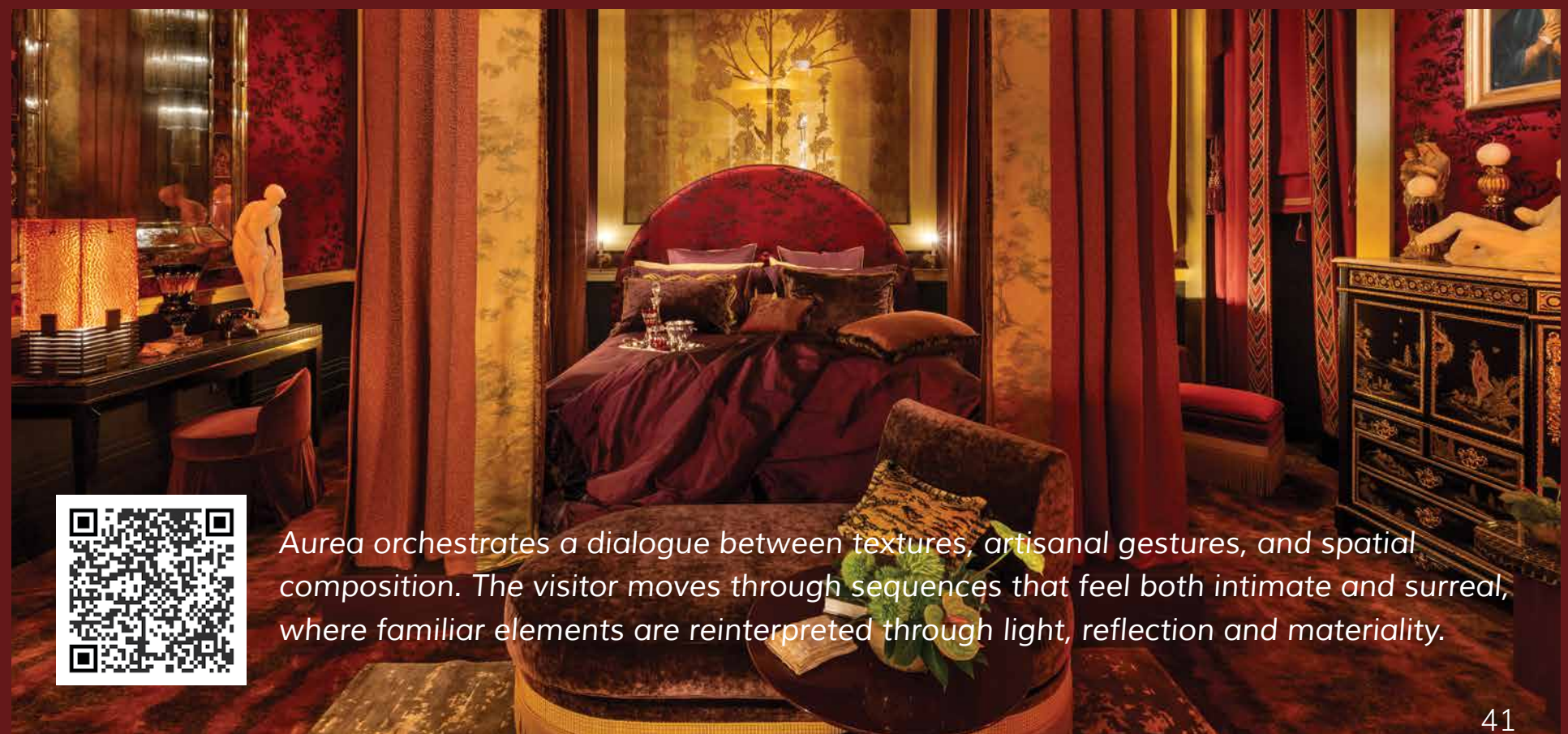
# Aurea

## Gold Returned With Confidence

Aurea invites imagination into an architectural fiction, an imagined hotel where the visitor becomes a traveller.



An Architectural Fiction



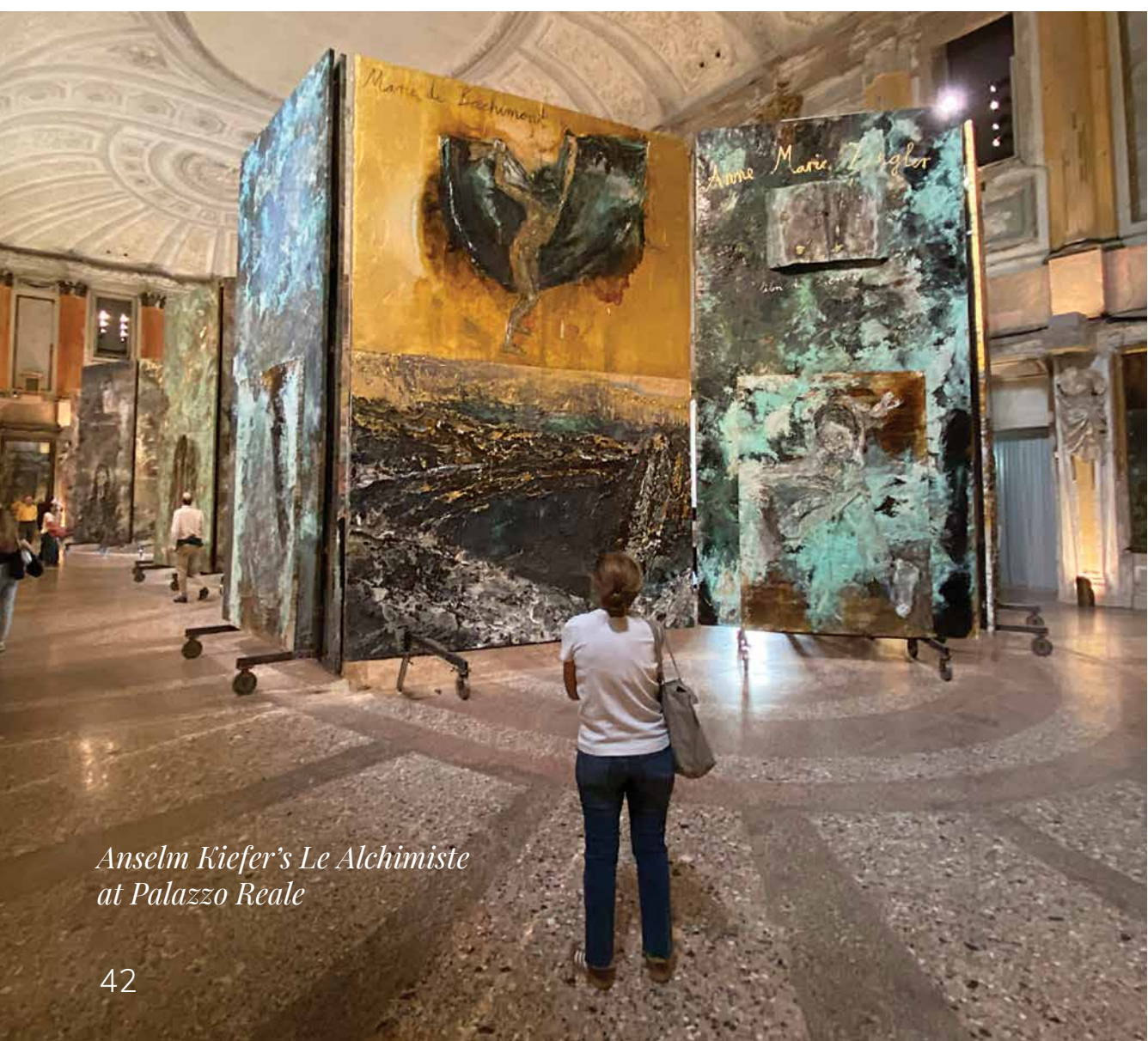
Aurea orchestrates a dialogue between textures, artisanal gestures, and spatial composition. The visitor moves through sequences that feel both intimate and surreal, where familiar elements are reinterpreted through light, reflection and materiality.

# Fuorisalone

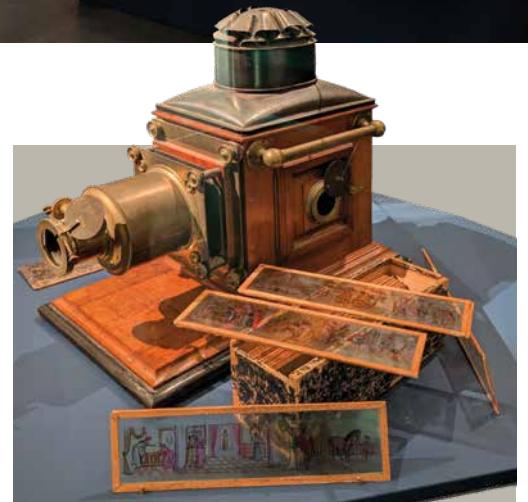
## Milan's Creative Chaos Returned

Fuorisalone 2026 pushed Milan far beyond the fairgrounds once again. Across Brera, Tortona, 5Vie, and Porta Venezia, historic spaces transformed into immersive installations filled with AI-driven environments, tactile materials, collectible objects, oversized sculptures, and theatrical lighting.

→ Celebrating 150 years of photography at Mudec



Anselm Kiefer's *Le Alchimiste* at Palazzo Reale



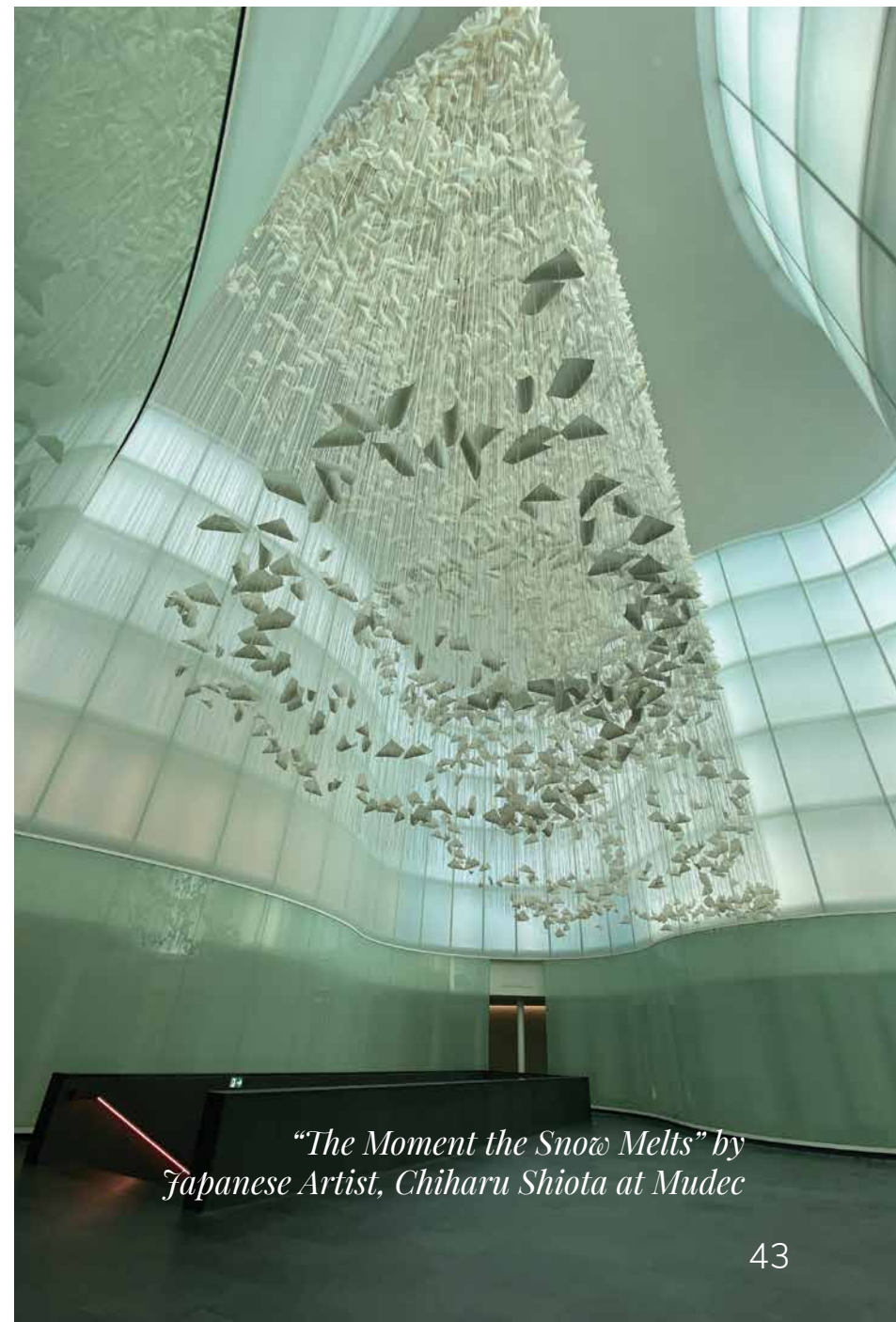
The Eames Houses



At Milan Design Week 2026, the 800-square-metre Eames Houses exhibition and the launch of the Eames Pavilion System revisited Charles Eames and Ray Eames' vision for modular, human-scale living.



The fully engineered system reinterprets the Eameses' iconic prefabricated architecture for contemporary spaces.



"The Moment the Snow Melts" by Japanese Artist, Chiharu Shiota at Mudec

# Superdesign

This is Where Things Got Interesting

Superdesign continued to be one of the week's most experimental destinations. Less formal than the fairgrounds and far less predictable, it brought together immersive installations, emerging technology, playful concepts, and brands willing to take creative risks. It was loud, colourful, slightly chaotic, and exactly what Milan Design Week needed.



*One Earth – House of the Heart is an international children's architecture workshop by Japanese Architect, Toyo Ito. It reimagines the home & community through children's imagination and planetary awareness.*



*Hans Boodt Mannequins "Rebel" Collection*



*"Act of Embrace – On Gesture, Material and Presence" by Designer Antoine Peters*



*The larger-than-life puffy octopus inflates the energy at 10 Corso Como*

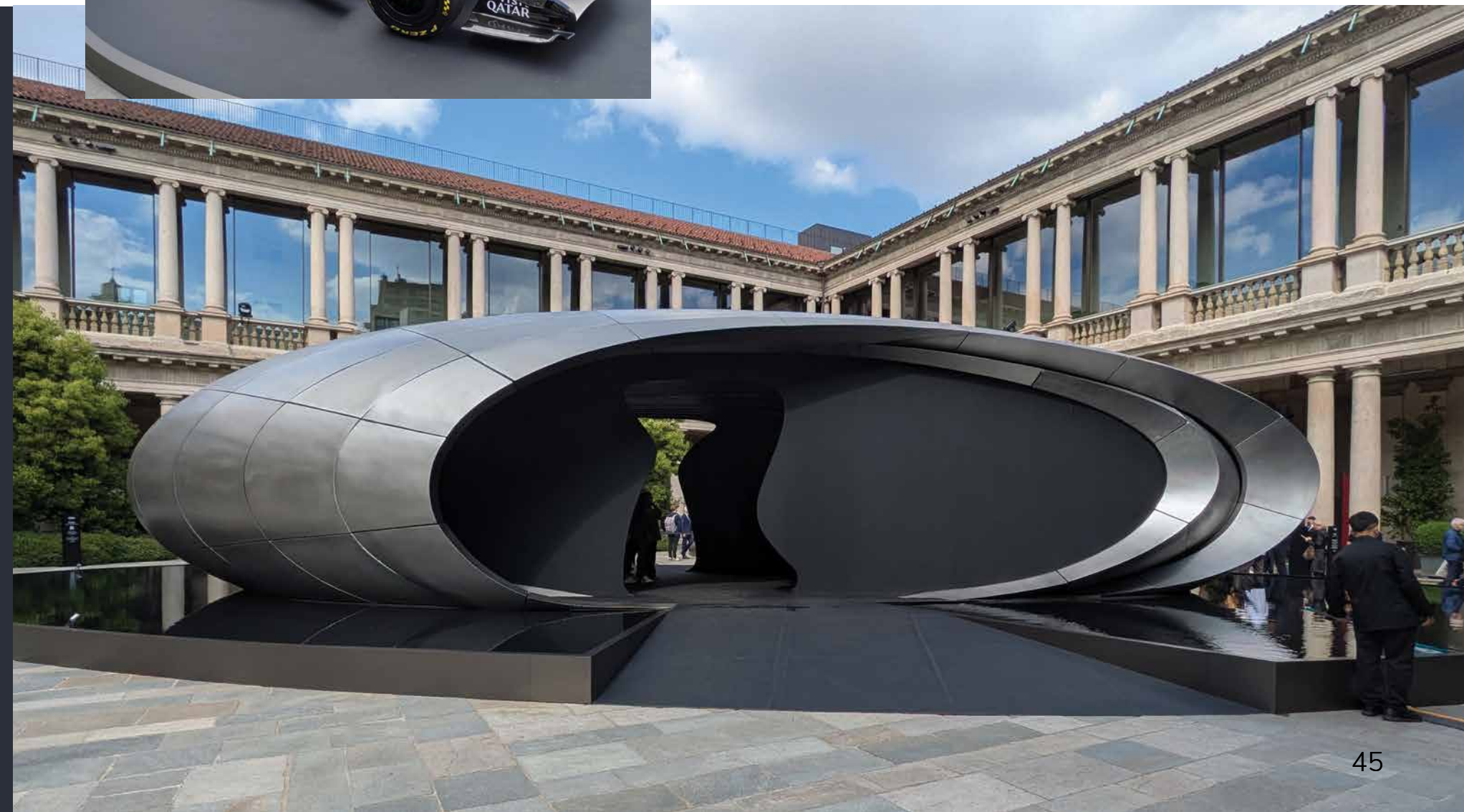


## A Moment of Reflection:

Audi lands a UFO at Porto Venezia



Highlight at Milan Design Week 2026, the Audi pavilion designed by Zaha Hadid's practice presented an ovoid, shape-shifting form that transformed as you moved around it, amplified by its reflection in a surrounding pool.



# SaloneSatellite

## Keep an Eye on These Names

SaloneSatellite once again proved why it remains one of the most closely watched sections of Milan Design Week. Dedicated to emerging designers under 35, it offered a glimpse into the next generation of thinking around furniture, objects, sustainability, and material innovation.

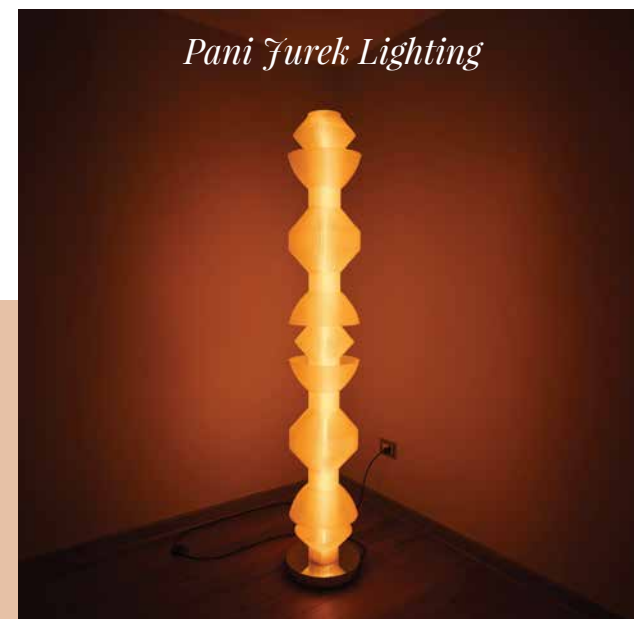
Raw ideas, fresh perspectives, and the kind of creativity that still feels unfiltered.



*Bio-Vide: Becoming Object - a conceptual design project by Japanese artist, Takuma Yamazaki*



*Jimmy Rojas presented a luminous piece where glass, light, and florals merge into a poetic, almost suspended moment*



*Pani Jurek Lighting*



*Sculptural lighting by Belgium-based Studio Corthals Loïc*

*Kenji Abe's Lacuna, inspired by natural porous structures*



*Talia Luvaton Vases, hand-molded from vegetable-tanned leather - Trace Collection*



*Fé by Tavinho Camerino - Interactive Armchair inspired by Brazilian devotional ribbons*

*Cascade by ZKI Design draws inspiration from falling water*



*Blue Sputnik - a chair built from repurposed industrial textile spools*



*Ruya Akyol Studio Exhibit*

**SIMPLY SOFAS**®

SO FA, SO GOOD®

# The Art of Giving In

Good taste is acquired slowly. It slips in quietly. Through texture. Through shadow. Through the slow curve of a silhouette or the cool confidence of stone beneath your fingertips.

At first, you barely notice it.

Then suddenly, rough fabrics feel unforgivable. Ordinary spaces begin shedding their charm with alarming speed.

Few places tempt the senses quite like Milan. This year, it moved through tactility.

Bouclé with dangerous amounts of depth. Timber that looked almost smoked by time. Stone left imperfect enough to feel human. Interiors designed not simply to impress, but to disarm completely. Seating was more about surrendering beautifully.

The effect is subtle. Until it isn't.

This instinct continues to guide Simply Sofas across Europe in search of collections with architectural presence, tactile intelligence, and enough emotional pull to reshape the atmosphere of a room without saying a word.

Because the most dangerous thing about truly good design is this: once you develop a taste for it, there is no graceful return to ordinary.



## Visit our showrooms

### BANGALORE

Mission Road: 12, Shamarao Compound, Mission Road Cross, Bangalore: 560 027  
Call: (080) 221 23355/222 32223, 98861 59999  
Email: sofasogood@simplysofas.in

Mekhri Circle: 4/2, Bellary Road, Sadashivnagar, diag. opp. Palace Grounds, Bangalore: 560 080  
Call: (080) 236 11415 / 236 17171, 99023 09999  
Email: sofasogoodblr@simplysofas.in

### CHENNAI

15, Khader Nawaz Khan Road, Nungambakkam, Chennai: 600 006  
Call: 95515 66666, 99401 49999, 90948 66666  
Email: chennai@simplysofas.in

### COIMBATORE

13/1, Circuit House Road, Behind HDFC House, Race Course, Coimbatore: 641 018  
Call: (0422) 427 6666, 95979 99999  
Email: coimbatore@simplysofas.in

### KOCHI

2/296, Opp. Hotel Wyte Fort, NH 47 Bypass, Kundanoor, Maradu P.O. Ernakulam: 682 304  
Call: (0484) 230 7777, 230 2111, 90480 16666, 95676 09999  
Email: kerala@simplysofas.in



Follow us for the latest updates on trends and ideas



simplysofas.in